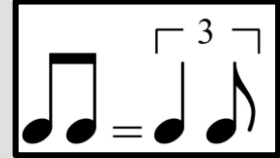
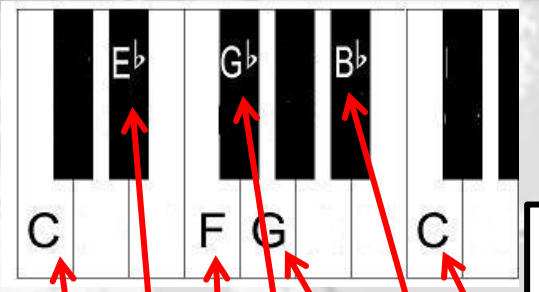
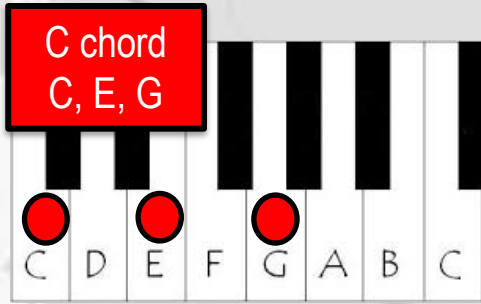


**Chord** – two or more notes played at the same time

**Blues Scale** – a scale used for improvising

**12-bar blues chords in C**

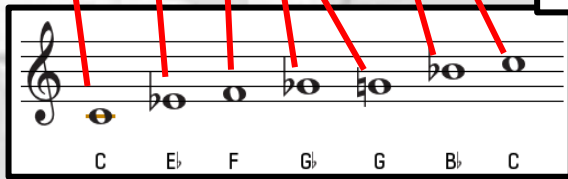
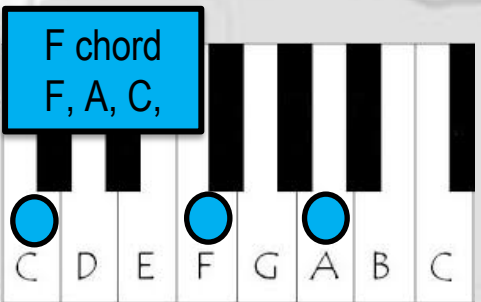


Swing rhythm

**Improvising** – making up music on the spot

Blues Lyrics follow AAB structure

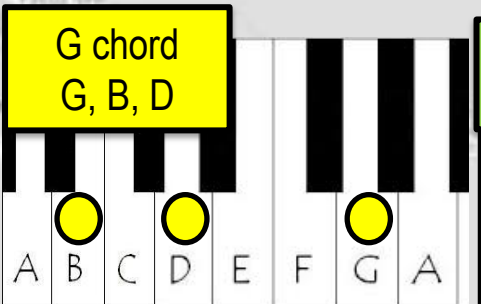
C ///	C ///	C ///	C ///
F ///	F ///	C ///	C ///
G ///	F ///	C ///	C ///



**12-Bar Blues Progression**

I ///	I ///	I ///	I ///
IV ///	IV ///	I ///	I ///
V ///	IV ///	I ///	I ///

- A** Mmmm, standin' at the crossroad, I tried to flag a ride
- A** Standin' at the crossroad, I tried to flag a ride
- B** Didn't nobody seem to know me, everybody pass me by



**Walking Bass Line** – uses the most important notes from the chords



**Tonic** – 1<sup>st</sup> **I** (C chord)  
**Subdominant** – 4<sup>th</sup> **IV** (F chord)  
**Dominant** – 5<sup>th</sup> **V** (G chord)

